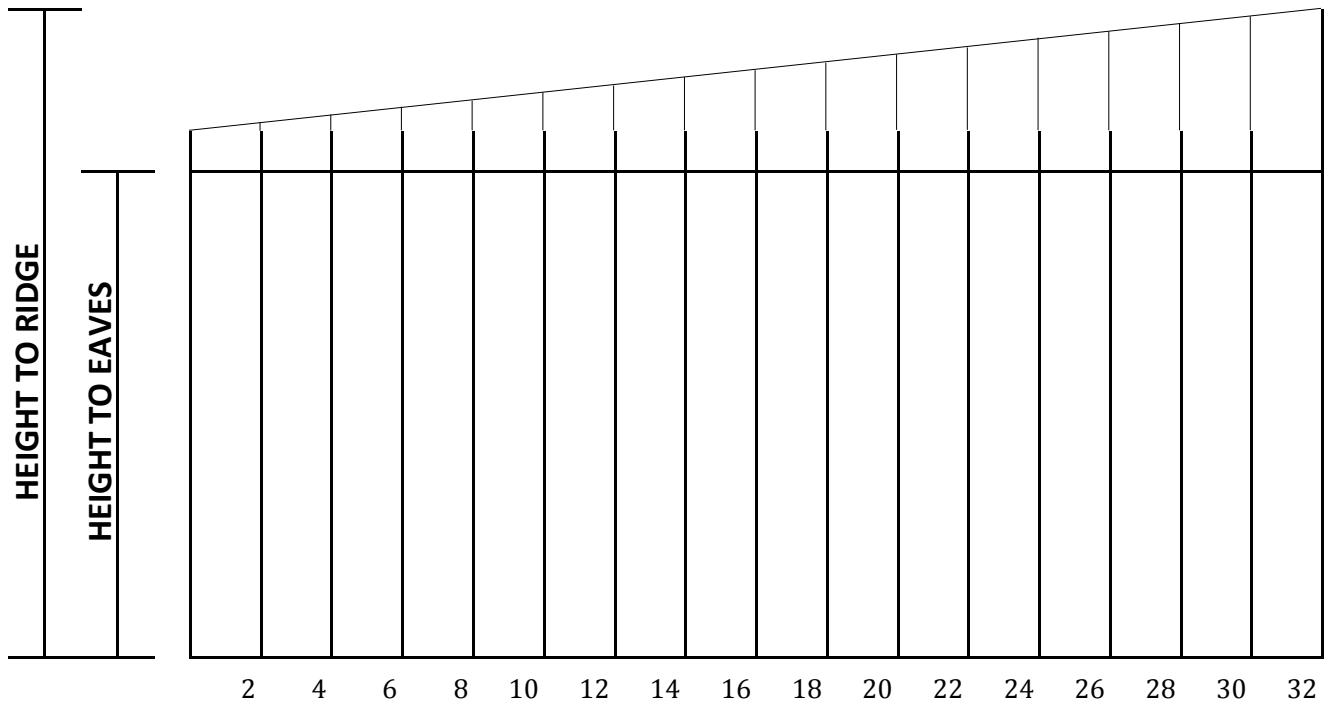


Knight Ridge Heights



Length of Building	Fascia	Height to Ridge				
		6'6" Concrete			7'0" Concrete	
		No Roof	Galv Steel	Cement Fibre	Galv Steel	Cement Fibre
<9'1"	4½"	6'10½"	6'11¾"	7'0¼"	7'5¾"	7'6¼"
10'1"	5½"	6'11½"	7'0¾"	7'1¼"	7'6¾"	7'7¼"
12'1"	6½"	7'0½"	7'1¾"	7'2¼"	7'7¾"	7'8¼"
14'1"	7½"	7'1½"	7'2¾"	7'3¼"	7'8¾"	7'9¼"
16'1"	8½"	7'2½"	7'3¾"	7'4¼"	7'9¾"	7'10¼"
18'1"	9½"	7'3½"	7'4¾"	7'5¼"	7'10¾"	7'11¼"
20'1"	10½"	7'4½"	7'5¾"	7'6¼"	7'11¾"	8'0¼"
22'1"	11½"	7'5½"	7'6¾"	7'7¼"	8'0¾"	8'1¼"
24'1"	12½"	7'6½"	7'7¾"	7'8¼"	8'1¾"	8'2¼"
26'1"	13½"	7'7½"	7'8¾"	7'9¼"	8'2¾"	8'3¼"
28'1"	14½"	7'8½"	7'9¾"	7'10¼"	8'3¾"	8'4¼"
30'1"	15½"	7'9½"	7'10¾"	7'11¼"	8'4¾"	8'5¼"
32'1"	16½"	7'10½"	7'11¾"	8'0¼"	8'5¾"	8'6¼"

All Knight Buildings below 12' in Length are considered Sheds and presumed to have no Garage Door.

If a Garage Door is required in a Knight Building under 12' Long a 16' Fascia and larger Back Timber are fitted to accommodate.

All Fascias have a 4" Fan above the Ridge on the Front Fascia.