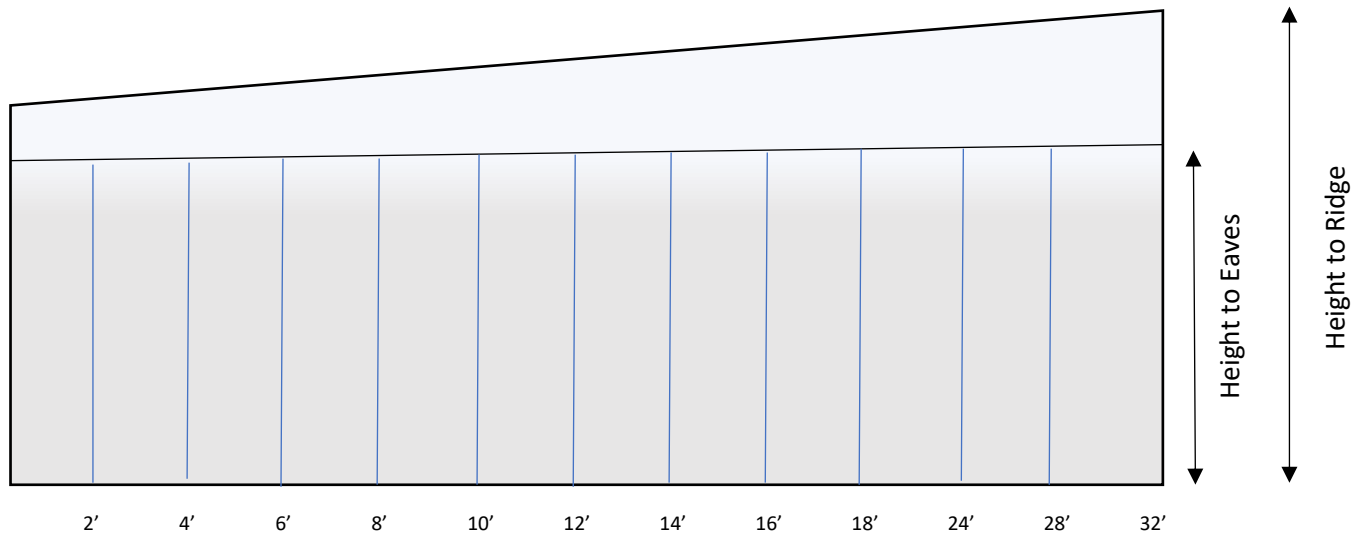


Knight Ridge Heights



Length Of Building	Fascia	Height to Ridge		
		No Roof Sheets (Height of roof truss)	6'6" (1981mm) Concrete Panel (Eaves)	7'0" (2133mm) Concrete Panel (Eaves)
		Box Profile Roof Sheet	Box Profile Roof Sheet	Box Profile Roof Sheet
<9'1" (2769mm)	4½" (114mm)	6'10½" (2096mm)	6'11¾" (2127mm)	7'5¾" (2280mm)
10'1" (3073mm)	5½" (140mm)	6'11½" (2121mm)	7'0" (2153mm)	7'6" (2305mm)
12'1" (3683mm)	6½" (165mm)	7'0" (2146mm)	7'1¾" (2178mm)	7'7¾" (2330mm)
14'1" (4293mm)	7½" (191mm)	7'1½" (2172mm)	7'2¾" (2203mm)	7'8¾" (2356mm)
16'1" (4902mm)	8½" (216mm)	7'2½" (2197mm)	7'3¾" (2229mm)	7'9¾" (2381mm)
18'1" (5519mm)	9½" (241mm)	7'3½" (2223mm)	7'4¾" (2254mm)	7'10¾" (2407mm)
20'1" (6121mm)	10½" (267mm)	7'4½" (2248mm)	7'5¾" (2280mm)	7'11¾" (2432mm)
22'1" (6731mm)	11½" (292mm)	7'5½" (2273mm)	7'6¾" (2305mm)	8'0¾" (2457mm)
24'1" (7341mm)	12½" (318mm)	7'6½" (2299mm)	7'7¾" (2330mm)	8'1¾" (2483mm)
26'1" (7950mm)	13½" (343mm)	7'7½" (2324mm)	7'8¾" (2356mm)	8'2¾" (2508mm)
28'1" (8560mm)	14½" (368mm)	7'8½" (2350mm)	7'9¾" (2381mm)	8'3¾" (2534mm)
30'1" (9169mm)	15½" (394mm)	7'9½" (2375mm)	7'10¾" (2407mm)	8'4¾" (2559mm)
32'1" (9779mm)	16½" (419mm)	7'10½" (2400mm)	7'11¾" (2432mm)	8'5¾" (2584mm)

All Knight Buildings below 12' in Length are considered S heds and presumed to have no Garage Door.
 If a Garage Door is required in a Knight Building under 12' Long a 16'
 Fascia and larger Back Timber are fitted to accommodate.
 All Fascias have a 4" Fan above the Ridge on the Front Fascia.